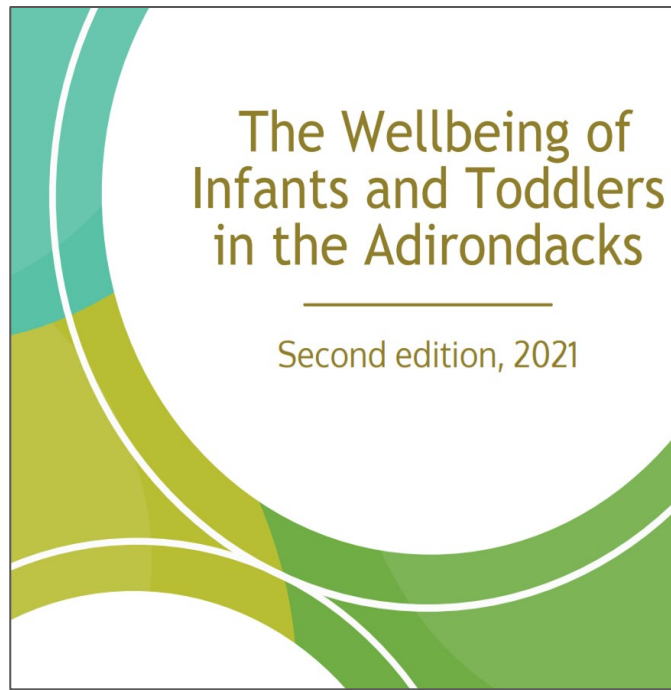


Child Care in the Adirondack Region

Rose Blanchard & Kate Ryan



ADIRONDACK
BIRTH TO THREE
ALLIANCE



www.adirondackbt3.org

kate.ryan@adkfoundation.org

- Provides a singular voice for early childhood issues
- Builds awareness of early childhood development by highlighting data, programs, and initiatives across the region
- Mobilizes business, health, nonprofit, government and faith leaders to champion comprehensive early childhood system reforms
- Engages elected officials and policymakers to further their support of young children and their families.

Today's Objectives:

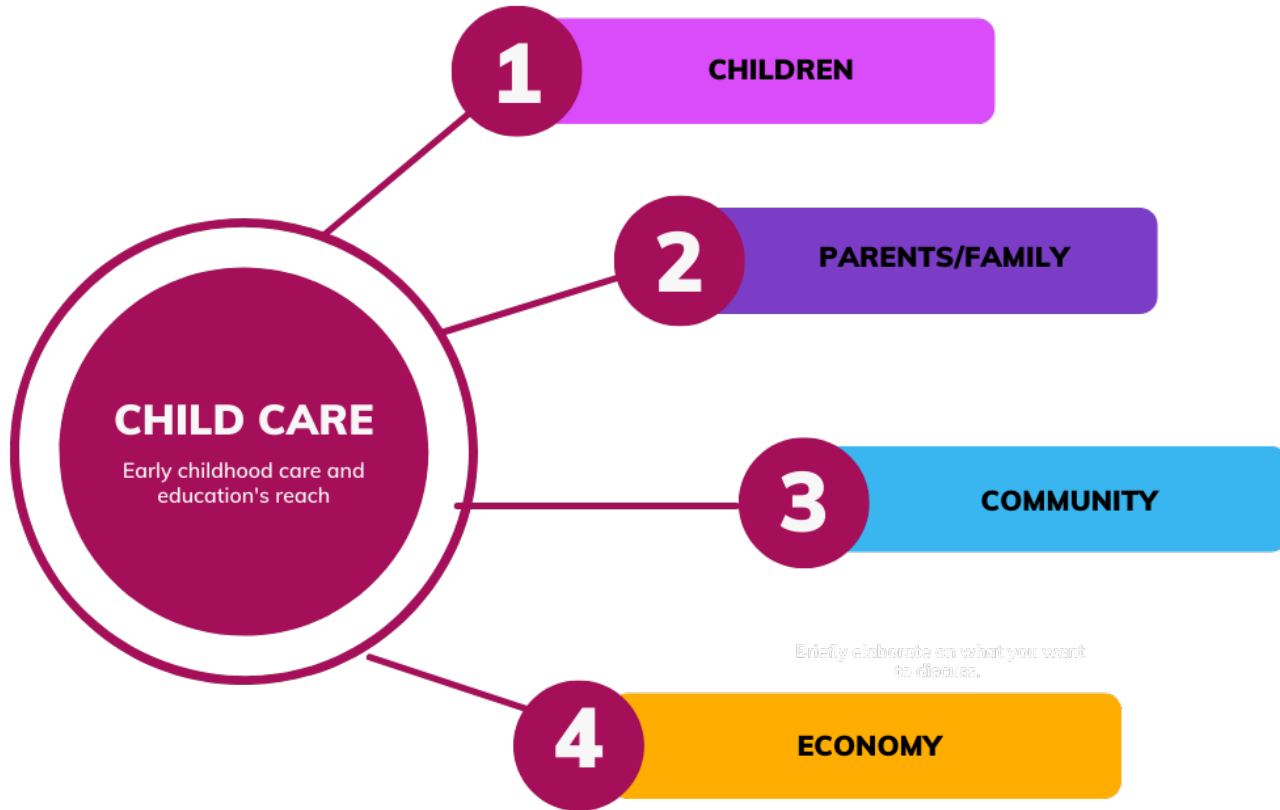
- Discuss child care's impact on infant and toddler development and our region
- Review the State of Child Care
- Discuss next steps to assist in current and future efforts to strengthen the child care system

Prenatal to Three:

- Babies' brains develop fastest from birth to age three - 1 million new neural connections per second
 - Their experiences, both positive and negative, build the foundation for brain and body architecture that will support their ability to learn, their behavior, and their overall health in their youth and for the rest of their lives.
 - These differences in the brains of babies are seen as early as 6 months old.
- Who supports the building of these young brains? The people that the infant, toddler, and child spends his/her time with: parents, other family members, and caregivers
 - The most important positive experience: supportive relationships, consistent routines
 - Research has found these to be as important for healthy brain and body development as good nutrition and protection from environmental toxins.
 - Negative experiences: changing care providers, stress, neglect, trauma

What does quality child care look like?

- Caregivers are responsive to the needs of each child.
- Engaging experiences for children.
- Warm and positive interactions
- Learning opportunities are developmentally appropriate, interactive and plentiful.
- Health, safety and welfare are priorities



1

CHILDREN

Demographics

- Percentage of children under 3 years old: 6,850 individuals or 2.9% of the total population
- Approximately 6,978 children birth to 17 years of age live at or below the federal poverty level.

Unique Challenges

- Brain studies controlling for only socioeconomic status, have shown brain differences as early as six to twelve months
- Children with special needs require care

Benefits

- Study found that amount of conversational turn-taking a child experienced mattered more than socioeconomic status when looking at brain scans
- Serve and Return
- Ready for school and ready for life

2

PARENTS/FAMILY

Demographics

- As of 2019, only 30% of eligible families were utilizing child care subsidies (now Child Care Assistance Program)
- 6-25% of families who are not income-eligible for federal nutrition assistance have experienced food insecurities.

Unique Challenges

- Private-pay costs negatively impact a family's usage of child care
- Non-traditional work hours
- Transportation and housing challenges

Benefits

- Consistent child care reduces parental stress
- Caregivers are able to function as “brain builders” in parents’ absence
- Licensed child care providers utilize Child and Adult Care Food Program (CACFP) to serve nutritious meals to children
- Families earning up to 300% the federal poverty level qualify for child care assistance

3

COMMUNITY

Demographics

- 38% of Essex County residents indicated child care as a social concern on the 2022 Community Health Survey

Unique Challenges

- According to US Census data, 100% of our region is considered to be rural

Benefits

- Growing future problem solvers
- Fostering development of decision-makers
- Reduced socioeconomic, racial, and ethnic inequalities

4

ECONOMY

Demographics

- Median income of families: \$56,087 (NY State average is \$66,323)

Unique Challenges

- Parents working in tourist or gig economy may require part time placements or non-traditional hours
- Private-pay parents may struggle to afford child care or pay increased rates

Benefits

- 2 generational approach
- For ever \$1 spent on early childhood, \$7 return on investment
- Reduced future health and educational costs
- Families have more spending power

CHILD CARE

Early childhood care and
education's reach

Rose Blanchard

Child Care Resource and Referral Agency

Project Director

rblanchard@cccnc.org



Next step: immediate actions

- Give providers the gift of
TIME
- Provide support with
FUNDING
- Help providers develop their
SKILLS

Next step: support current policy and funding

- Increase awareness of child care assistance and provide families with timely, accurate and accessible information about how to apply for child care assistance
- Provide assistance to existing child care providers and potential new providers
- Maximize the state resources dedicated to child care to benefit our businesses and families across the region